

Paros

## Harmony

???????? ?????: 893833

???? ?????: 2.000.000 EUR • ?????? ???: 5.600 m<sup>2</sup>

??????? ????????: 893833 - 14561 Paros

- ☐ ?? ??? ??????
- ☐ ?? ????????
- ☐ ??? ?????? ??????????
- ☐ ?????????????? ????????????????

??????? ???????? 893833 - 14561 Paros

?? ??? ??????

??????? ????????	893833	???? ??????	2.000.000 EUR
?????????? ??	4	?????	????
?????????		????????? ??????	ca. 214 m²
?????????	4		



??????? ???????? : 893833 - 14561 Paros

?? ????????





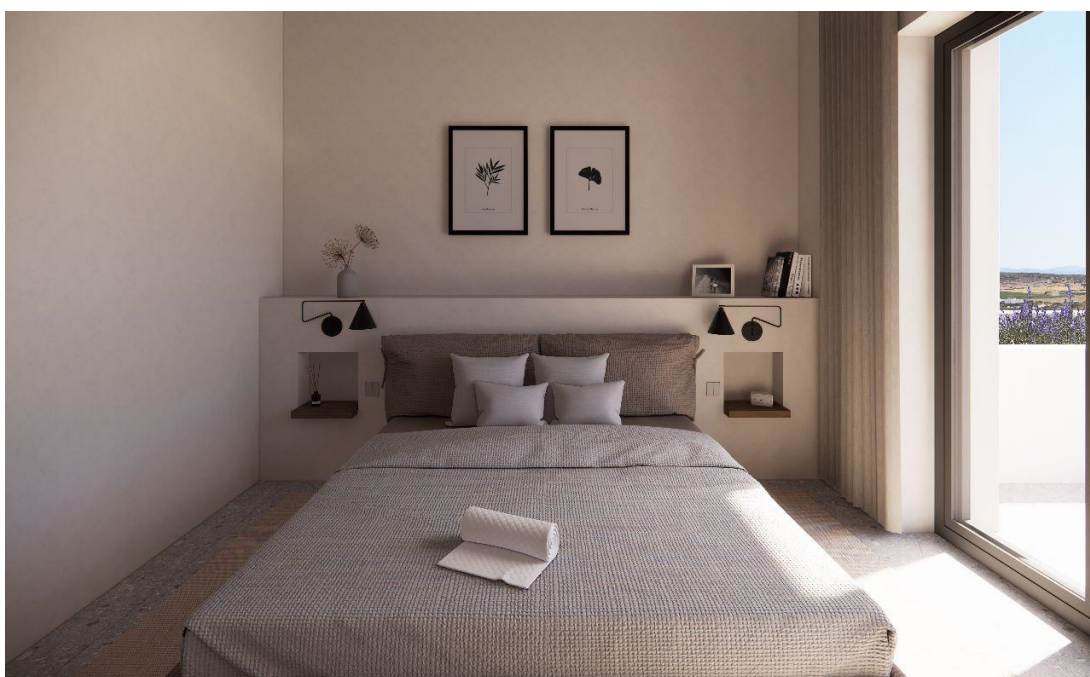
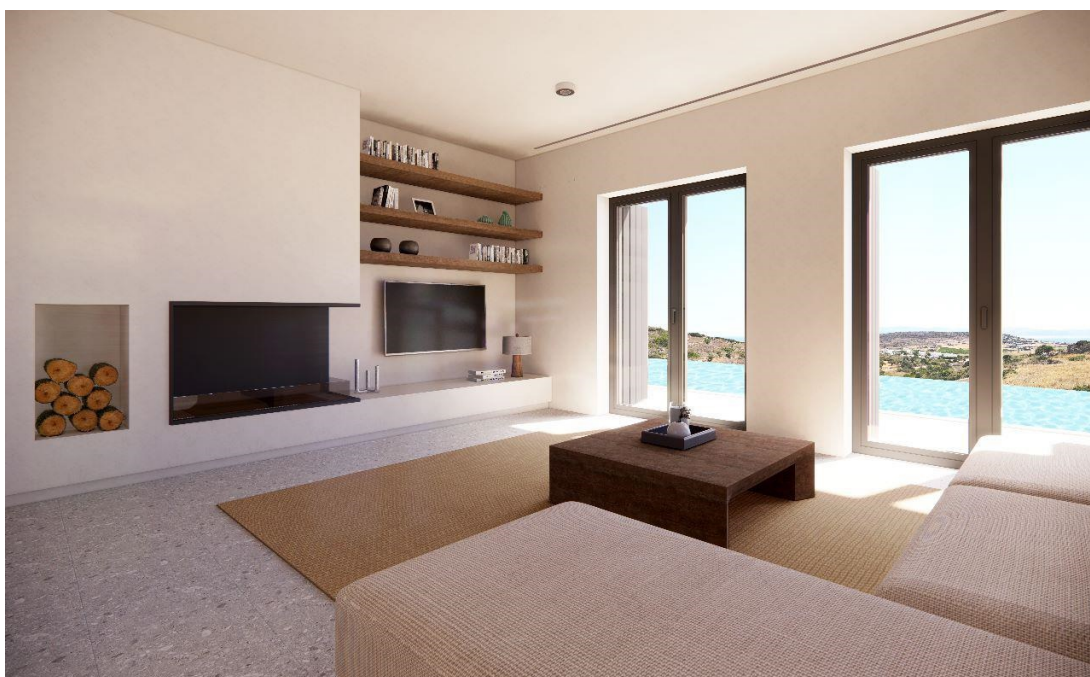
??????? ???????? : 893833 - 14561 Paros

?? ????????



??????? ???????? : 893833 - 14561 Paros

?? ????????





??????? ???????? : 893833 - 14561 Paros

?? ????????



??????? ???????? 893833 - 14561 Paros

??? ?????? ?????????

Located just a short 5-minute drive from the vibrant town of Naousa, this modern villa offers breathtaking views of the endless Aegean Sea and the nearby island of Naxos. Situated in the picturesque area of "Pretoria – Tria Pigadia" on Paros Island, the villa is nestled within a spacious 5,600 square meter plot of land.

The fully completed and equipped villa spans a total area of 214.53 square meters across two levels, with an attached guest house. The ground floor encompasses 143.77 square meters and features a living room with a fireplace, a dining room, a kitchen, two en-suite bedrooms, and a bathroom. Each of these spaces offers panoramic sea views and direct access to the terrace, private pool, BBQ area, and lounge space.

Ascending to the first floor, which covers 39.45 square meters, you'll find the master bedroom with an en-suite bathroom and expansive external verandas offering stunning 360-degree views of Naxos Island.

Outside, the front terrace hosts the BBQ and lounge area, complete with a large dining table. Adjacent to the main house is the guest house (31.31 square meters) featuring a bathroom, a small kitchenette, and a private veranda.

The villa comes fully equipped with modern appliances and individual air-conditioning units in every room, all meeting the highest international standards for energy efficiency (Class A). The architectural design prioritizes sustainability, aiming to minimize the villa's energy footprint.

Additional amenities include covered parking for two cars, storage facilities, and extensive landscaping with native plants, seamlessly integrating the estate with the surrounding environment.

Moreover, the property offers the potential for further expansion, with the opportunity to build an additional 60 square meters under current construction regulations.



??????? ???????: 893833 - 14561 Paros

????????????? ????????????????

??? ?????????????? ??????????????, ?????????????? ?? ?? ?????????? ?????????????? ???:

VON POLL REAL ESTATE Athens

---

Kifisias Avenue 227, 14561 Kifisia

Tel.: +30 21 06 14 87 77

E-Mail: [salesgreece@von-poll.com](mailto:salesgreece@von-poll.com)

???? ?????????? ???????? ??? von Poll Immobilien GmbH

---

[www.von-poll.com](http://www.von-poll.com)